

TAMAHERE

MODEL COUNTRY SCHOOL

Phone: (07) 856 9238

Website: <https://tamahere.school.nz/>

Email: reception@tamahere.school.nz



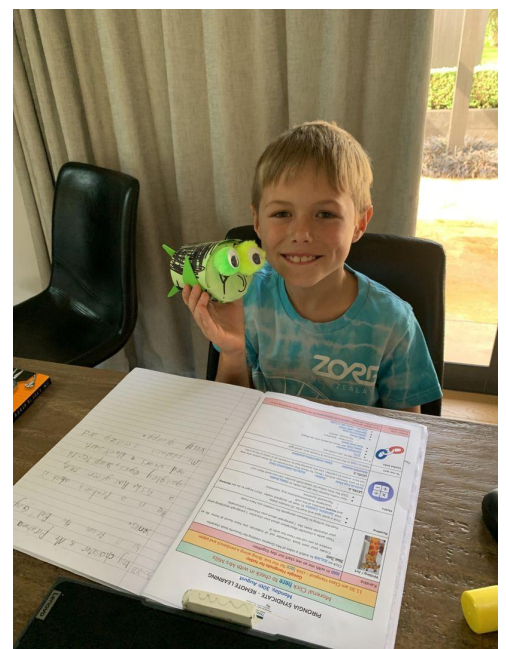
Nurturing Our Future - Growing Together
Kia atawhai aa mua - Kia tipu ngatahi

Week 6 Happenings:

We hope you are all going well and are happy together in your bubbles. Haven't we been lucky with the weather? Being able to get outside for some fun and exercise makes all the difference and will help keep everyone ready for whatever Cross Country / Fun Run experience we are able to run, when we get back to school.

Last week, we felt a newsletter was not the right thing to send out, as we were trying not to burden your inboxes. Now though, I guess we are all getting more into routine and things are feeling a bit more normal, as we progress into Level 3 with the possibility of Level 2 in our sights again. I feel, despite the more contagious Delta variant, we are a lot more relaxed this time around, as we have all been here before and know what to expect. Every bubble is completely unique, and if you are struggling, please reach out to us and we will try and help in whatever ways we can.

Thank you everyone for your support and the efforts you are going to, to make online learning happen. We understand that if it is just too much for you, in your busy working bubbles - please don't stress, just enjoy being with your children and they will gain from all the language and experiences they will be getting, whether it is in the kitchen or garden. Thank you also for managing ways to look after your children, without having to attend our very restrictive Level 3 Bubble School. We do however really appreciate the essential workers amongst you, who are having to use this service for their children. We



Together As One! Confident Can Do Kids! Honour Be Your Guide.

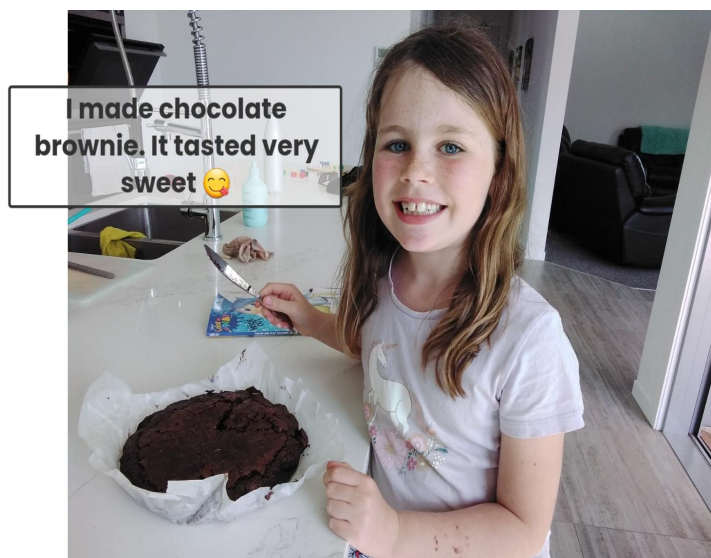
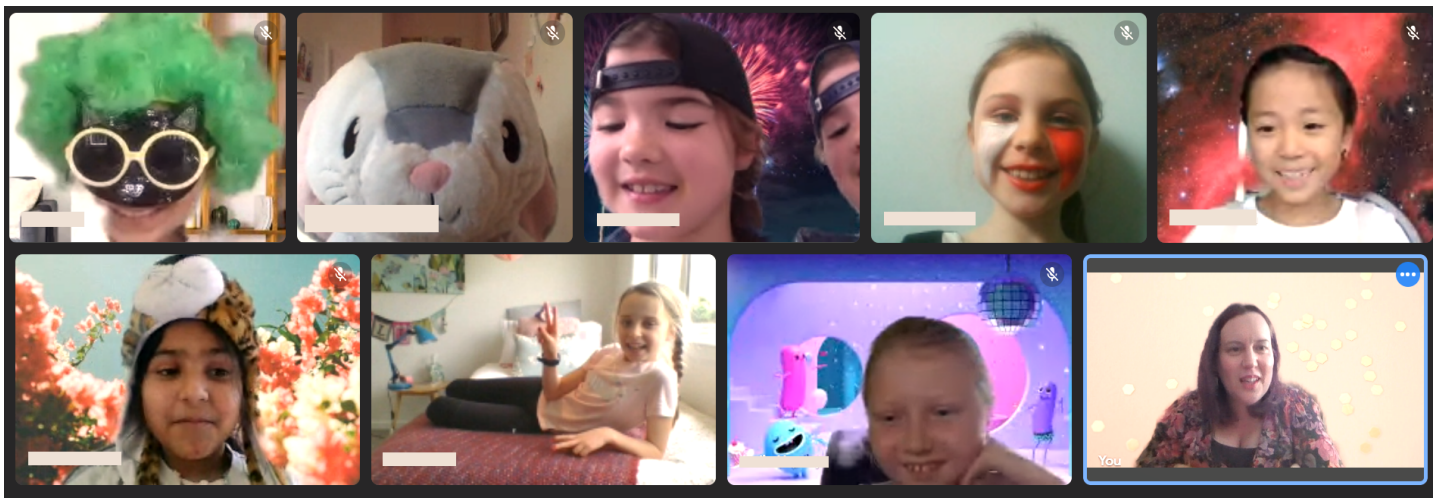
are endeavouring to keep your children as safe as possible.

As you are aware, many of our planned activities scheduled for this term will no longer be able to happen as intended but when we are back at school, we will let you know what can be achieved and will do our best to make Level 2 a happy place for your children to be.

Kia kaha, Nga mihi nui.

Enjoy this special, gifted whānau time.

KOWHAI 4 Girls Google Meet:



Together As One! Confident Can Do Kids! Honour Be Your Guide.

NIKAU 1 Google Meet:



Together As One! Confident Can Do Kids! Honour Be Your Guide.

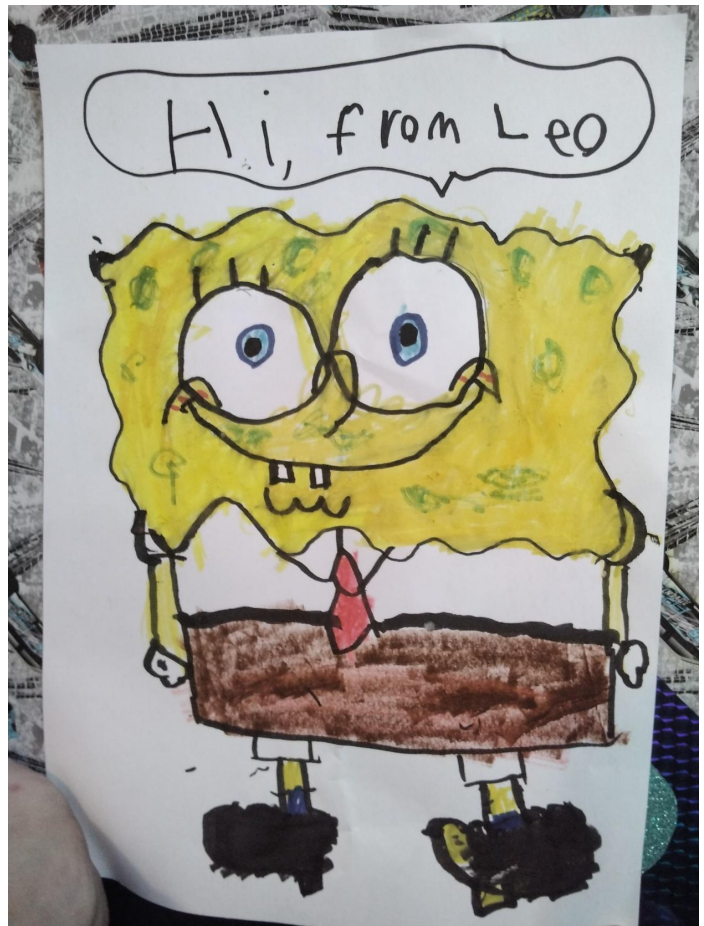
MATAI 11- Exercise class with Mrs Copponi's daughter Mikayla. Matai 11 are doing a different activity each day on Google meets and the kids love the exercise class!



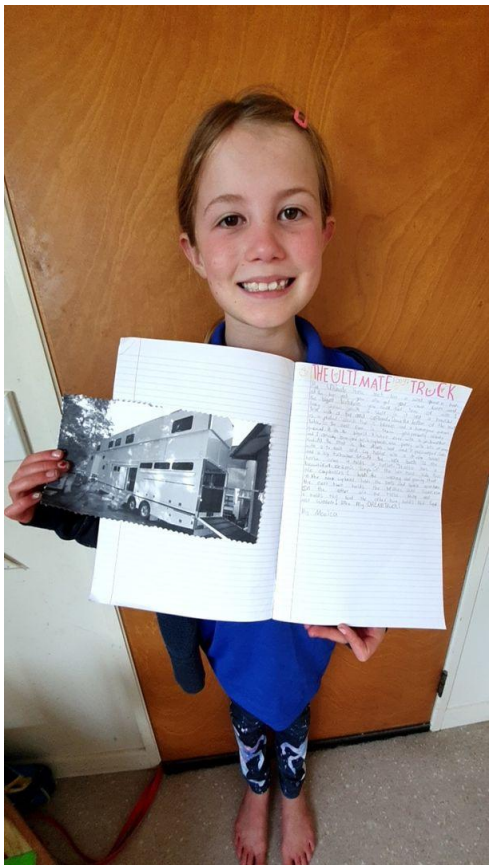
This is my heat pack bunny and I sewed it all by myself. His name is Dasher.



Together As One! Confident Can Do Kids! Honour Be Your Guide.



Together As One! Confident Can Do Kids! Honour Be Your Guide.



Together As One! Confident Can Do Kids! Honour Be Your Guide.



PB4L - Positive Behaviour for Learning

It seems like a long time ago now, but we want to celebrate our Week 3 Principal Award recipients.

Our Principal Award recipients for Week 3 Term 3 were:

Students of Week 3 Term 3 'I am reliable and trustworthy'	
NIKAU 1	Blake F
KAURI 2	Addison M
KOWHAI 4	Aynsley B
TITOKI 6	Benjamin McC
RIMU 7	Vida U
POHUTUKAWA 8	Teacher Absent
RATA 9	Jessica L
TOTARA 10	Lucas P
MATAI 11	Thomas B
TANEKAHA 12	Brooklyn M-J
MIRO 13	Emma D
PUKATEA 14	Poppy L
KARAKA 15	Caterina H
MANUKA 16	Shyla J
MAHOE 17	Tilly D
TAWA 19	Pearse L
HOROPITO 20	Madison F
HOROEKA 21	Molly B

Together As One! Confident Can Do Kids! Honour Be Your Guide.

And we also want to mention Braxton P from Karaka 15, who was a recipient of the Principal Award for Week 2 'I value others & the environment', but as his teacher was absent, he did not receive his Certificate at the time.

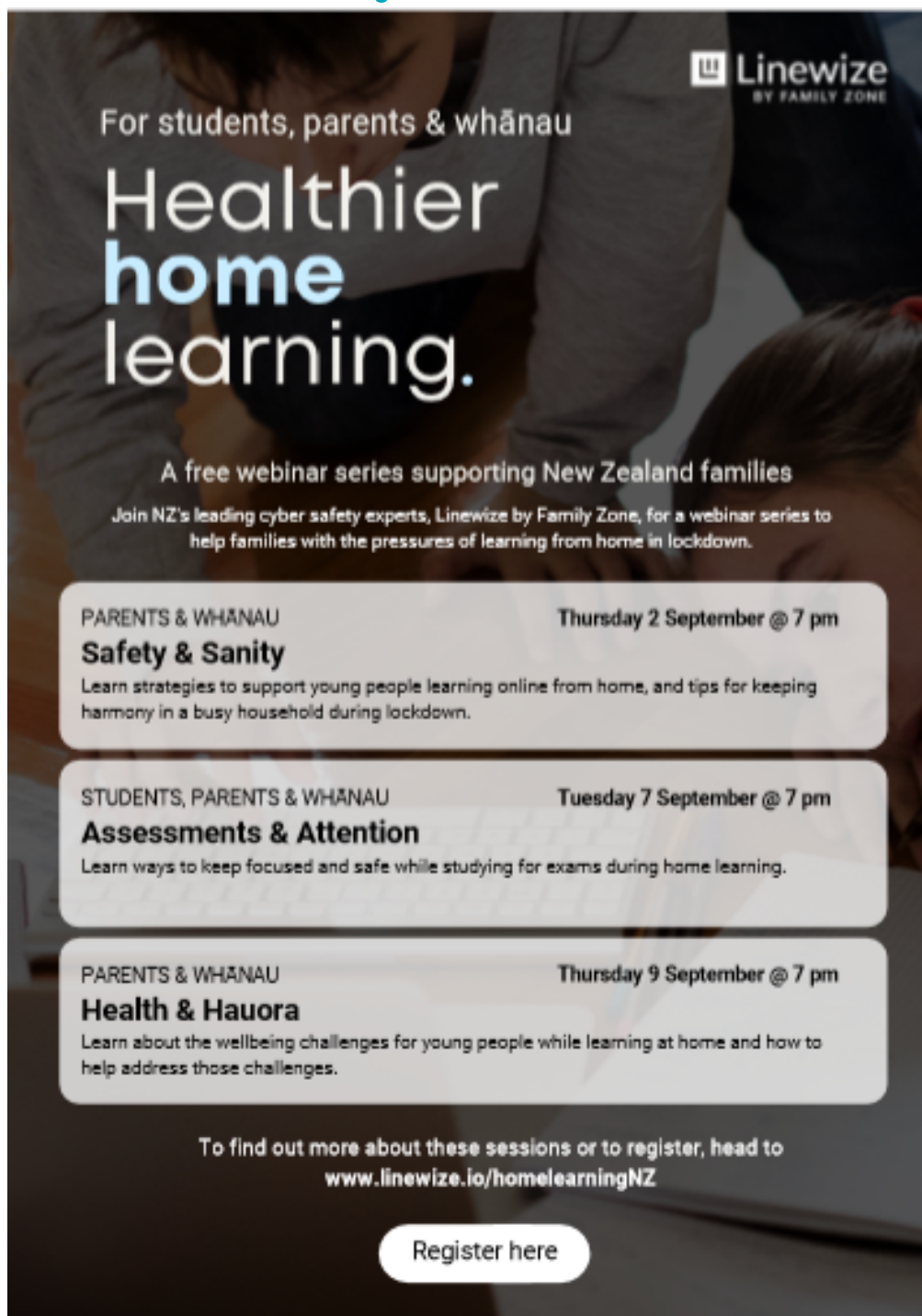


Together As One! Confident Can Do Kids! Honour Be Your Guide.

Cyber Safety - FREE Webinar Series Starting Tonight at 7.00pm

Linewize are offering free support to our parents & whānau, by providing access to their 'Healthier Home Learning' webinar series.

The three-webinar series will provide students, families and whānau with current, timely, and expert-led information on online safety, to support young people during home learning. Everyone is welcome and there is no cost to attend. We encourage you to share this series of digital events with your wider community but be quick - **the first Webinar is tonight at 7.00pm!** To find out more information about these free sessions or to register, head to www.linewize.io/homelearningNZ



For students, parents & whānau

**Healthier
home
learning.**

A free webinar series supporting New Zealand families

Join NZ's leading cyber safety experts, Linewize by Family Zone, for a webinar series to help families with the pressures of learning from home in lockdown.

PARENTS & WHĀNAU Thursday 2 September @ 7 pm
Safety & Sanity
Learn strategies to support young people learning online from home, and tips for keeping harmony in a busy household during lockdown.

STUDENTS, PARENTS & WHĀNAU Tuesday 7 September @ 7 pm
Assessments & Attention
Learn ways to keep focused and safe while studying for exams during home learning.

PARENTS & WHĀNAU Thursday 9 September @ 7 pm
Health & Hauora
Learn about the wellbeing challenges for young people while learning at home and how to help address those challenges.

To find out more about these sessions or to register, head to
www.linewize.io/homelearningNZ

Register here

Together As One! Confident Can Do Kids! Honour Be Your Guide.

Ballot for 2022 Enrolments Now Open

For all out-of-zone families expecting to enrol a child at Tamahere Model Country School in 2022, our annual ballot for Out-of-Zone placements is now open until 3:00pm on Tuesday 19th October 2021. Please note if you are out-of-zone, even if your child is a sibling of a current student, you have to be in the ballot to have a chance of your child being enrolled at our school in 2022. As with the last few years, except for siblings and possible priority enrolments, no out-of-zone children will be allocated a ballot place in 2022. This is to help alleviate the overcrowding challenges we are currently facing.



Extra Home Learning Support

Home Learning TV | Papa Kāinga Website:

You can access the Home Learning TV | Papa Kāinga [Learning from Home website here](#). Their programming schedule [is available by clicking here](#).

LIVE AND ON-DEMAND TELEVISION CONTENT:

Mauri Reo, Mauri Ora



- In partnership with Māori Television, the Ministry of Education launched the Mauri Reo, Mauri Ora Kōanga 2021 series to ensure Māori language learning can continue anywhere, anytime for tamariki during and after Alert Level 4.

Together As One! Confident Can Do Kids! Honour Be Your Guide.

- The channel is full of new and engaging content, while also taking the chance to revisit some of the more popular lessons of the show enjoyed by tamariki in the comfort and safety of their bubbles.
- Every episode is presented by Māori language teachers and exponents with support from expert educationalists. Tamariki are encouraged through play, art, song and imagination to continue learning whether they are in a classroom, at home or in isolation.
- Mauri Reo, Mauri Ora Kōanga 2021 screens on Te Reo channel every weekday from 9am to 12pm. Programmes will also be available online on the [Māori TV website](#) and on the Māori+ app.
- The lesson schedule for the Mauri Reo, Mauri Ora Kōanga series can be found by [clicking here](#).

Home Learning | Papa Kainga TV



- Home Learning | Papa Kāinga TV is back online and on television weekdays between 9am–1pm.
- Home Learning | Papa Kainga TV is primarily for learners without internet connectivity. It can be accessed on Duke+1 (Freeview channel 18). Those households who have Sky can also access Duke +1 on channel 504.
- For households who have internet connectivity, lessons can be accessed through TVNZ On Demand. Schedules are published on [Learning from Home](#).
- If you need a reminder of how to enable captions – [information can be found here](#).

Tamahere New Entrant Enrolment Tracking

Thank you to the many families that have already contacted the school office, confirming names to be included in our 2022 cradle roll.

Can all families with pre-schoolers and anyone expecting to enrol a child at Tamahere Model Country School for 2022, please ensure that you have added their names to our cradle roll, which greatly assists us with planning for next year.

Please email the school office on reception@tamahere.school.nz

Thank you for your assistance.



Together As One! Confident Can Do Kids! Honour Be Your Guide.

SAVE THE DATE



Caretaker Role at the Tamahere Community Centre (TCC)

A position has become available for a part time caretaker/cleaner at the Tamahere Community Centre.

This facility has just undergone an extensive refurbishment and we are looking for someone to clean as required, on a daily basis. The role also includes administering the bookings and after function inspections.

The position would suit (but not limited to) a person with children at the Tamahere Country School as it involves a morning inspection and a daily dry mop at 3.30pm. It would involve other cleaning as required and regular weekend work.

Enquiries should in the first instance be emailed to Graham at smag.mac1@gmail.com



TAMAHERE COMMUNITY CENTRE

Together As One! Confident Can Do Kids! Honour Be Your Guide.

Ag Day Newsletter # 5

AG DAY INFORMATION IS NOW AVAILABLE ON OUR TMCS WEBSITE!

Check out all the details you need to know about Ag Day and **how to enter**, on our new 'Ag Day' section on the website under the 'Our School' tab or please click on this [link to Ag Day information on TMCS Website](#)

ORDERING CHICKS TO RAISE FOR AG DAY

We are pleased to advise that we will have 5 week old chicks available for Ag Day for the Raising Chicks category. They are from Eureka Poultry Farm at a cost of \$15 each (note: minimum of 2 each must be ordered). Please click on the link below to access the order form.



Orders must be emailed to reception@tamahere.school.nz. Due to the current Covid restrictions, the close-off for orders has been extended, until further notice. We will arrange chicks to be collected & delivered once restrictions allow.

[Order form for Chickens](#)

For any inquiries please contact Rachel Algar 020 422 6711.

SAFE ANIMAL HANDLING - WASH YOUR HANDS!

Unfortunately we have had some instances of children becoming unwell with *Cryptosporidium* and *Campylobacter* transferred from lambs, likely due to insufficient hand washing after handling, which has caused severe vomiting and diarrhoea in the children.

Avoid catching diseases from animals with good health and hygiene practices. Make sure young children wash their hands properly after handling animals.

Please click here for more details

[w Safe Animal Handling.docx](#)



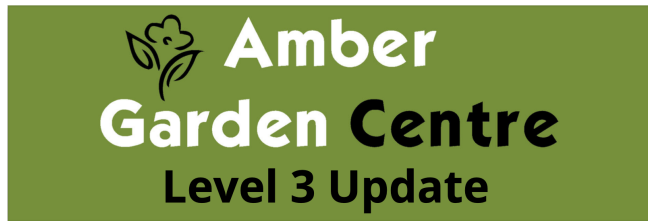
Together As One! Confident Can Do Kids! Honour Be Your Guide.

VEGE GARDEN COMPETITION

Our Vege Garden competition opened last Saturday 28th August, and you still have time to start. The competition will be judged at your property on Saturday 16th October (or by arrangement). Do you have green fingers? This is a great activity for the kids to do at home! Gardens can be as simple as lettuce grown in an upcycled container- let the kids use their imagination!



Prizes, kindly sponsored by **Amber Garden Centre**, will be announced on our School Ag Day, on Thursday 21st October 2021.



The team at **Amber Garden Centre** is offering a contactless pick up service, during Level 3. If you are interested in purchasing plants or dry goods, you will need to phone their shop on 07 827 6259, and leave a message with your phone number and name, or email gardening@ambergardencentre.co.nz with your details, including your phone number. Someone in their team will get in contact via phone to organise a pickup time and payment options. If you have a preferred time to make contact, please also leave this in your message.

Amber Garden Centre's full range of stock is available, but they will not be able to order in or acquire specialist orders until Level 2. Here's some of what they have to offer to get your Vege Garden looking great!!!

- Vegetable Tray (8 Punnets) \$28
- Annuals Tray (8 Punnets) \$28

During Level 3, individual punnets will not be available. Trays will be of a mixed selection, requests will be taken into account but not guaranteed

- Compost. \$8.90 each or 4 bags for \$25
- Potting mix. \$17.50 each or 2 bags for \$30
- Chicken and Sheep Pellets 10kg \$19.90
- Organic Sheep Pellets 5kg \$14.90
- Slug Slam \$4
- Tui Fertiliser bags 1.5kg \$9.90
- Capsicum and Tomato individually potted \$5.99 each
- Bagged seed potatoes \$9.50

All perennials, shrubs, trees, fruit trees, hedging, etc are also available.

Together As One! Confident Can Do Kids! Honour Be Your Guide.

How to enter:

Any child who wishes to enter must complete an entry form available on the school website, under [Ag Day information](#), or please [click here to access the entry form](#).

Entries must be received by Monday 6th September 2021.



ANIMAL CONTACTS:

If you do not already have your own animals, then we have the following contacts available for orphans:

Lambs:

Contact Amy Beech: 021 542 547

Amy will be offering Lambs to be raised, available from late-August through to October, however the sooner people get in touch with her the better. Lambs are \$65 each - this money can be refunded on the return of a weaned, healthy lamb after Ag Day. Amy is also able to offer advice on rearing.

Lambs & Kids (Goats)

Contact Brooke: 021 488 854. Please see the information included in last week's newsletter. Brooke has kid goats available (not to be given back to her), and also some lambs to borrow for Ag Day pets, which are to be returned to her.



Together As One! Confident Can Do Kids! Honour Be Your Guide.

Calves:

Contact Roger Duncan 021 929 263

Roger (and his wife Karen) will be offering Calves for sale (not to be returned to farm). They are also available to offer advice, and can sell feed/colostrum etc, to assist with the raising of the calf, as required. Some keen children may enquire about rearing a calf at Roger's farm, if they are dedicated and reliable.

CALLING ALL AG DAY JUDGES!

Our Waikato Ag Day Coordinator is in need of some more judges to support the local school events.

If you have some experience judging Ag Day events, or are interested in being trained as a judge for future years, please contact Dennis Ticklepenney (Waikato Co-ordinator) by emailing janden@xtra.co.nz

Waikato A&P Association Judges Training Dates are:

- 11.00am on Wednesday 15th September at the Kihikihi Domain
- 11.00 am on Friday 17th September at the Matamata Netball Courts
- 11.00am on Saturday 18th September at Horsham Downs School

Everyone is welcome!!!!

TROPHY RETURN:

Can we please ask that all 2020 trophies be POLISHED and then returned to the school office, once covid restrictions allow - thanks!

ANIMAL DEMO & JUDGES VISIT DAY - Friday 17th September, from 12.20pm-1.15pm, outside the Tamahere Community Centre (TCC). Judges will give advice on how to look after the animals and prepare for Ag Day. All children with animals should attend and parents are also very welcome.

ANIMAL HEALTH DAY - SATURDAY 11th SEPTEMBER:

A Free Animal Health Check for lambs, kids and calves is kindly offered by one of our Sponsors, Cambridge Vets, where they will offer free vaccinations and tail docking. The date for this is Saturday 11th September 2021, from 9.00am to 10.00am. The Health Check is held in the Tamahere Community Centre (TCC) carpark.



PGG WRIGHTSON CAMBRIDGE

We are excited to offer a special AG Day price list to the students of Tamahere School.

Lambs/Kids -

Sprayfo Primo Lamb Milk Powder 20kg - **\$99.00**

Lambstart Muesli 20kg - **\$27.50**



Calves -

Maxcare Premium Milk Powder 20kg - **\$99.00**

Gusto 20% Calf Blend 20kg - **\$21.00**

Come see the team at 87 Duke Street, Cambridge or phone 07 823 0640

Together As One! Confident Can Do Kids! Honour Be Your Guide.

Tamahere Park Shading Community Consultation

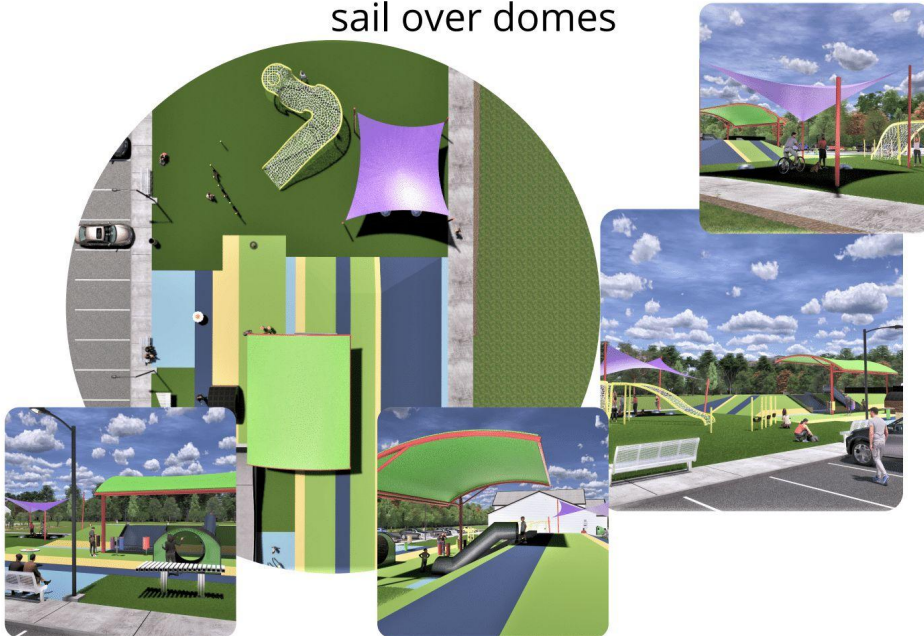
The Tamahere Lions have joined forces with WDC & TCC and had planned to hold a community consultation meeting this week, to share their plans for proposed shading at the Tamahere Park and seek consultation from the community on the proposals.

The proposal arose because at times in summer, some of the playground equipment gets very hot, especially the steel slides and domes.

They will aim to re-convene it at a later date, but in the meantime, they have created the options below and encourage everyone to provide feedback on the 3 designs shown below, by completing the [feedback form](#).

Tamahere Reserve Playground

Option 1 - Cantilever shelter over slides, and shade sail over domes



The shelter and sail will provide shade over the slides and domes during the hottest part of the day in the height of summer. The shade will prevent the stainless steel from reaching high temperatures and make it safer and more comfortable for children to use them. The shade will also provide a limited area for children, parents and guardians to shield themselves from direct sunlight.

The cost for these shelters is estimated at around \$75,000

The shade sail could be the first part of a larger group of shade sails shown in Option 2.

Together As One! Confident Can Do Kids! Honour Be Your Guide.

Tamahere Reserve Playground

Option 2 - Cantilever shelter over slides, and shade sails over domes and climbing frame

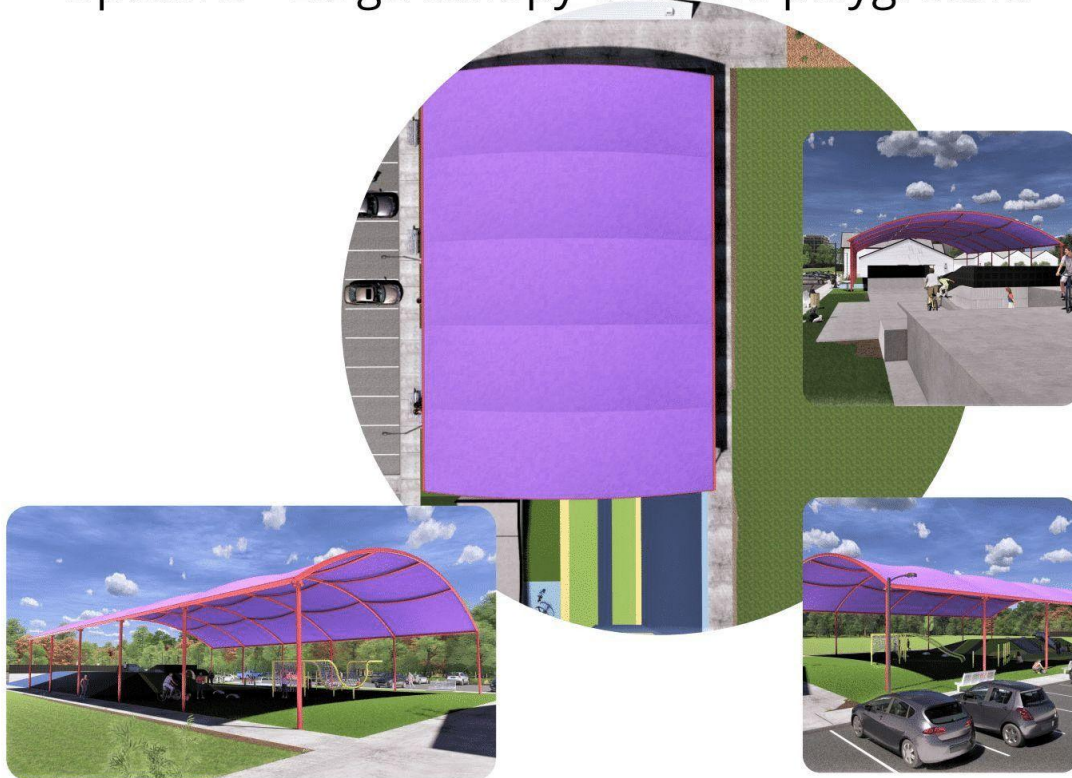


This option is effectively an extension to the previous option, providing additional shade sails covering the large climbing frame. This increases the area where children, parents and carers can shield themselves from direct sunlight.

The cost for these shelters is estimated at around \$95,000

Tamahere Reserve Playground

Option 3 - Large canopy over the playground



The canopy would cover most of the playground area, providing maximum shading to equipment.

The main disadvantage of this option is that the playground would be in shade throughout the year, even during cold winter months. While this option has been presented for discussion, it is not considered to be an appropriate solution for this playground.

The cost to provide this shelter is estimated to be in excess of \$400,000

SH21 Underpass Project Update - 1st September 2021

Hi everyone,

I hope that you have all been safe and well over the last few weeks; personally it is always a challenging time at home as our whanau balances two working professional lives with the requirements of parenting three children, all aged under five!

Whilst under Alert Level 4 we were unable to work at our State Highway 21 Underpass site, apart from ensuring that our temporary fencing and other protective structures were in place and effective. With the move to Alert Level 3 we are able to return to site from today, Wednesday 1st September.

Our work crews will be following the specific guidelines developed by the Construction Health and Safety New Zealand (CHASNZ) group for the safe return to the job for construction workers.

These standards and guidelines include measures for pre-planning work, documenting the health and safety of staff, ensuring safe physical distancing is maintained, cleaning of all plant, tools and vehicles, and being able to quickly and accurately trace people should they come in contact with someone who contracts COVID19.

Taking these steps will ensure that we have an operational site, while reducing the risk of COVID-19 appearing on site and/or spreading between crew members. The team is keen to push on with this project, and ensuring safe practice is key to this.

Please respect our work spaces, especially those on or near footpaths. This means physically distancing yourself from our crews and our worksite.

With Auckland remaining in Alert Level 4 for at least the next fortnight we are faced with issues relating to supply of materials and crews for specific aspects of the project. However our existing excavation has been slightly scoured out due to recent rainfall, and our immediate work will be focused around minimising the impact of this, to ensure no further erosion takes place. Following this we will be able to look at our next steps, and what work can be completed over the next few weeks.

As always, if you have any questions please feel free to contact me.

Stay safe,

Matt Kofoed
Stakeholder Manager
New Zealand

M | +64275409752
E | Matt.Kofoed@downer.co.nz

Together As One! Confident Can Do Kids! Honour Be Your Guide.