

TAMAHERE

MODEL COUNTRY SCHOOL

Phone: (07) 856 9238

Website: <https://tamahere.school.nz/>

Email: reception@tamahere.school.nz



Nurturing Our Future - Growing Together
Kia atawhai aa mua - Kia tipu ngatahi

Wiki/ Week 4 Happenings:

Surviving a winter term with significant flu illnesses and Covid 19 all around us.

Thank you all for your support in helping us to minimise the effects of this flu season, along with the ever circulating COVID 19 virus, which has significantly impacted many people. The use of masks, encouraging good hand hygiene and keeping children at home when they show any signs of illness, has certainly helped us to reduce the spread of the numerous bugs that are circulating at present. Special thanks to the parents who attended our Board meeting on Tuesday, to share their concerns for student and staff health & welfare and the importance of mask wearing and hand sanitising. We are also aware that by keeping the spread of these bugs as low as possible within our school, it gives our families the best chance to have a happy and healthy winter and allows parents to keep working and going about their business as usual, as much as possible.

The Ministries of Health and Education are encouraging schools to make the best decisions for their students, staff and communities. They state:

Under the framework, when at Orange traffic light setting, masks must be worn by ākonga aged 12 and above on school and public transport. It is also strongly recommended by public health officials that face masks are worn by students and staff in Year 4 to 13 when indoors, including combined classes when learning and during indoor assemblies.

Mask wearing when indoors continues to play an important role in minimising transmission of COVID-19 and winter illnesses, coupled with all your other layers of protection.

Framework. Case numbers in your community, winter illness absences and any vulnerability within your school community will inform your decisions.

As a result of all the information and the rates of illness in our school community, the lack of

Together As One! Confident Can Do Kids! Honour Be Your Guide.

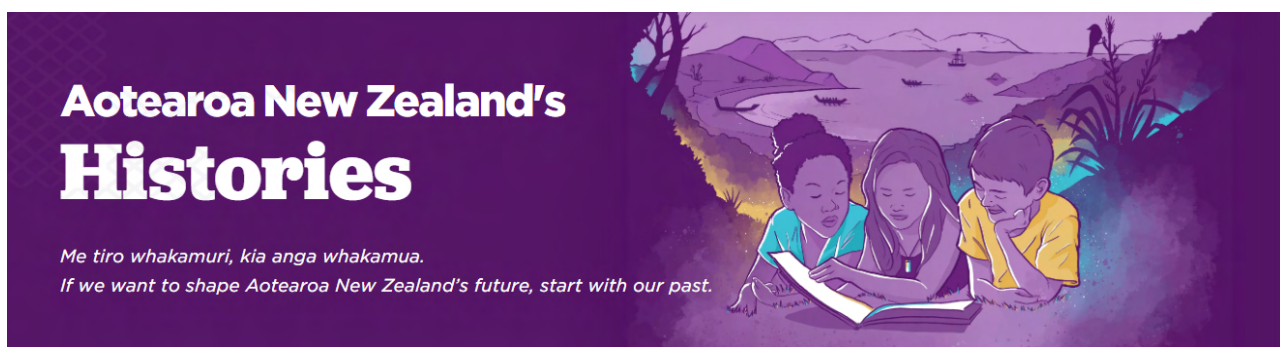
relievers and having a number of vulnerable children at our school, the Board has decided to **continue with the Government mask wearing guidelines for the rest of Term 3**. Our Year 5 and 6 classes are being amazing, showing kia manaaki to others, as they wear masks constantly. We understand it is not something that any of us enjoy. In our Pirongia - Year 3-4 classes, it is more challenging for only some to be wearing masks but we have plenty of masks available, so everyone can mask up and keep everyone better protected.

We do have a few families in our school at present, whose children are undergoing cancer and other critical treatments. We are asking classes with these children and their siblings in them, to all mask up to help protect these very vulnerable students and families, so that they can lead as normal a life as possible. Thank you once again for helping us to look after each other.

Thank you also to parents who come on site wearing your masks. It is great to see you and our teachers still love having spontaneous catch up conversations, to quickly resolve any issues that may arise. We also realise many of you have seen the increased independence of your children with our gate system and want this to continue. It is finding everyone's happy place.

Whanau o Tamahere Hui

Yesterday we had a very special Whanau o Tamahere Hui with a number of our Maori whanau joining us to look at our journey so far with the new Aotearoa Histories Curriculum and Ngaati Hauaa, along with other aspects of our learning and teaching. Kia ora for all your involvement and input of ideas and feedback that you gave to us to help in this journey.



We really value your input and perspective on the education of your tamariki. We are keen to hear from everyone, so if you were unable to attend this opportunity and would like to have a korero please pop in, phone or email Miss Parker or one of our teachers.

Together As One! Confident Can Do Kids! Honour Be Your Guide.

We have an Election!

We have had a great response to our Triennial Board Elections this year and have seven nominations for the four positions available, so we will be having an election for the first time in a few years. Thank you to the following people who have stepped up to the plate.

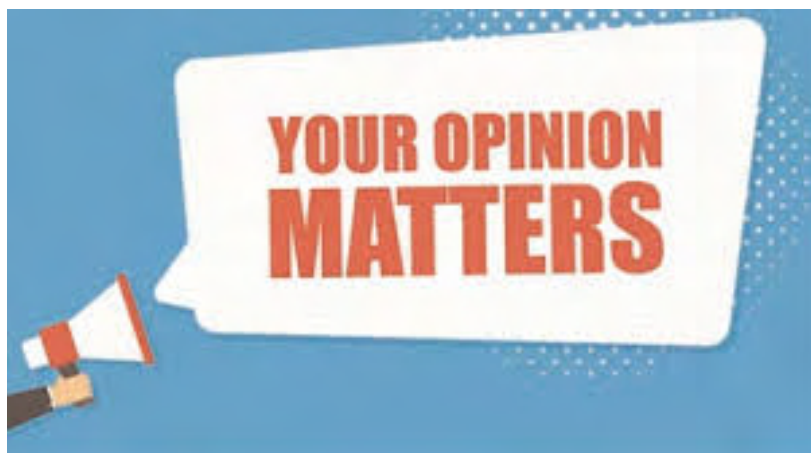
- Owen Culliney
- Andrea Dunseath
- Mike Jenkins
- Hilary van de Molen
- Buddy Annals
- James Jarvis
- Fraser Hodgson



Look out for voting papers which will be mailed to your homes mid next week, which should arrive in your letterbox not long after, depending on postal delays. In an effort to reduce costs, only one reply paid envelope will be provided per household. Multiple voting papers can be returned in the same envelope or these can be hand delivered to the Returning Officer, care of the school office.

Health Survey - Closing Monday 22nd August

If you have not had a chance to look at our Health survey and the information within this link, you have four more days before it closes. The more responses - the greater the accuracy so please take a few minutes to have your say. [Here is the link.](#)



Together As One! Confident Can Do Kids! Honour Be Your Guide.

QUIZ NIGHT - Get a Team together



Saturday 20th August 2022 at the Tamahere Community Centre

NEWS FLASH- IF YOU WOULD LIKE TO BE IN A TEAM BUT HAVE

NOT QUITE GOT A TEAM TOGETHER EMAIL: pta@tamahere.school.nz

- Doors open at 6.00pm for a 7.00pm start
- B.Y.O food and drink
- Tables are 8 people for \$160.00
- Please complete the form below and let us know your Team Name.
Creativity is encouraged, as is fancy dress!
- Please organise a responsible way to get home at the end of the evening

Click on the link below to register your team and pay the PTA

[QUIZ NIGHT ENTRY FORM](#)

An Afternoon with Sir Graham Henry, Craig Palmer, Ali Shanks & Sarah Cowley Ross

Please spread the word and support this great event.

We would like to warmly extend the invitation to yourself, and anyone else who may be interested to join us for a relaxed Friday afternoon networking event, 'An Afternoon with Sir Graham Henry & Guests', right here in our own backyard at the Waikato's newest corporate event space, catered by Weave eatery.

Together As One! Confident Can Do Kids! Honour Be Your Guide.

Funds raised from this fun afternoon will go towards our new playground equipment and the maintenance of our Grade 2 Heritage Listed Library.

Sir Graham will share insightful anecdotes, learnings, and lots of laughs, we're sure, in a panel discussion joined by Tamahere locals - Craig Palmer (current NZ Men's Track Cycling Coach - fresh from the Commonwealth Games success!) and Alison Shanks (Former World Champion, NZ Commonwealth Medal Cyclist & current CGF Athletes Commission). MC'd by NZ Olympian Sarah Cowley Ross. Also great timing - the night before the All Blacks vs Argentina game at Waikato Stadium, or a potential Father's Day gift! We still have tickets available, so feel free to extend the invitation to anyone else who may wish to join! Please see details below:



**AN AFTERNOON WITH
SIR GRAHAM HENRY**
talking culture, resilience, and leadership

Joined by Craig Palmer - NZ Mens Track Cycling Coach,
and Alison Shanks, NZ Commonwealth Medal Cyclist.
MC'd by NZ Olympian, Sarah Cowley Ross

Proudly presented by
Johnston Associates

In conjunction with
Lewis
LAWYERS

September 2 2022, 4pm - 7pm
Waikato Innovation Park, Ruakura

Join us for a fantastic afternoon to raise funds for
Tamahere Model Country School. Tickets \$125 each.

Catered by Hamilton's newest eatery, Weave, this is the
perfect team building or client entertainment event.

Email pta@tamahere.school.nz or scan the QR code here
to secure your tickets.



**AN AFTERNOON WITH SIR
GRAHAM HENRY & GUESTS**
talking culture, resilience, and leadership

Featuring Craig Palmer - NZ Mens Track Cycling Coach,
and Alison Shanks, NZ Commonwealth Medal Cyclist.
MC'd by NZ Olympian, Sarah Cowley Ross

Proudly presented by
Johnston Associates

In conjunction with
Lewis
LAWYERS

September 2 2022, 4pm - 7pm
Waikato Innovation Park, Ruakura

Join us for a fantastic afternoon to raise funds for
Tamahere Model Country School. Tickets \$125 each.

Catered by Hamilton's newest eatery, Weave, this is the
perfect team building or client entertainment event.



Together As One! Confident Can Do Kids! Honour Be Your Guide.

TICKETS AVAILABLE VIA THE LINK BELOW:

\$125 per ticket, tables of 10 pax.

<https://docs.google.com/forms/d/1WJYzWYaHUR2-5yGINhLeNW04tZ94r7ZR88EUEjJmI5A/edit?ts=61af23e9>



A huge thanks to our amazing sponsors, *Johnston Associates & Lewis Lawyers*.

Follow updates via our Facebook Page

<https://www.facebook.com/An-Afternoon-with-Sir-Graham-Henry-106793715390281>

Tamahere Model Country School PTA

Upcoming Dates:

August / Here-turi-kōkā	
Rāhoroi/Wednesday 24th	★ ICAS - Spelling
Rāpare/Thursday 25th	★ ICAS - Science
September / Mahuru	
Rāpare/Thursday 1st	★ ICAS - Mathematics
Rāmere /Friday 2nd	★ AN AFTERNOON WITH SIR GRAHAM HENRY & GUESTS
Rāpare/ Thursday 8th	★ Hamilton (Junior) Regional Chess Tournament - held at TMCS
Rātū/Tuesday 13th	★ PTA Meeting
Rātū/Tuesday 20th	★ BOT Meeting
Rāmere /Friday 30th	★ END OF TERM 3
October / Whiringa-ā-nuku	
Rāhina/ Monday 17th	★ START OF TERM 4
Rāpare/ Thursday 20th	★ AG DAY
Rāhina/ Monday 24th	★ LABOUR DAY
Rātū /Tuesday 25th	★ GROUP DAY - hosted by TMCS
November / Whiringa-ā-rangi	
Rāhina/ Monday 14th	★ TEACHER ONLY DAY
December / Hakihea	
Rāmere /Friday 9th	★ 2022 GOLF DAY   Friday, 9 December 2022

Together As One! Confident Can Do Kids! Honour Be Your Guide.

PB4L - Positive Behaviour for Learning

Students of Week 3 'I am reliable and trustworthy'	
NIKAU 1	Chloe W
KAURI 2	Victoria T
KOWHAI 4	Connor H
PURIRI 5	George A
TITOKI 6	Olivia L
RIMU 7	Ben M
POHUTUKAWA 8	Hana K
RATA 9	Eloise C
TOTARA 10	Fraser M
MATAI 11	Poppy M
TANEKAHA 12	Ellie K
MIRO 13	Carolee N
PUKATEA 14	Mila D
KARAKA 15	Lyra R
MANUKA 16	Felicity C
TAWA 19	Ema R



Together As One! Confident Can Do Kids! Honour Be Your Guide.

Vision Focus Awards

We have experienced many wet lunchtimes this term. This week, we celebrated students who have shown Kia Kotahi, Kia Maanaki and Kia Maia, by being role models at breaktimes. To view the photo's please click on this [link](#)



Pirongia Marae Trip

Thank you to all the adults who offered to come on this trip with us, and we are pleased to say that you can all come. All children would have brought home a letter with some follow-up details this week and a form for those selected as drivers to fill out. Please note that all students are required to bring a packet of biscuits or home baking on Tuesday 30th August (the day before our trip). Many thanks!



Together As One! Confident Can Do Kids! Honour Be Your Guide.

Celebrating Student Success

Dylan H broke the Waikato 8 year old boys record in the 100m backstroke, at a meet held over the weekend at Water World. Dylan has been laser focused on the 8 year old record times and has been training extra hard to achieve this. Well done Dylan!!!

Please [click here](#) to watch Dylan's amazing race!



AG DAY Update # 4

Judge Demo a great success

Thank you to our judges Roger Duncan, Amrit Singh and Rachel Algar who came along to show the children how their animals will be inspected and judged at Ag Day. The weather was stunning and the children were captivated and learnt a lot. Thank you.



Ag Day Information is Available on TMCS Website!

Check out all the details you need to know about Ag Day on our section of the school website under 'Our School' > 'Ag Day' or [by clicking here](#).

Together As One! Confident Can Do Kids! Honour Be Your Guide.

Vet Health check Saturday 3rd September 9-10.00am



Once you have your animal, if you have any health concerns, need to get it vaccinated or banded (castrated) please come along to our Vet Health Check day on September 3rd from 9.00am to 10.00am.

Get your entry forms in

Please register your animal using one of these forms, so we can plan for the numbers on the day.

- [Caged pets](#)
- [Calves](#)
- [Kid goat](#)
- [Lambs](#)
- [Ponies](#)
- [Raising poultry](#)
- [Showing poultry](#)
- [Vegetable garden](#)



Vege Garden

If animals aren't for you, or you think you have green fingers, enter the Vege Garden comp! Gardens can be planted at home any time after Monday 22nd August and you will need to tend your garden and keep a garden diary of your activity until judging on Saturday 15th October, or by arrangement. Entries close Friday 16th September. More info is on the website.

Animal Contacts

If you do not already have your own animals, we have the following contacts available for orphans for those who wish to raise an animal:

Lambs:

Contact Amy Beech: 021 542 547

Amy will be offering orphan lambs to be raised, available from late-August through to October. However the sooner people get in touch with her the better. Lambs are \$65 each, and this money can be refunded on the return of a weaned, healthy lamb after Ag Day. Amy is also able to offer advice on rearing.

Contact Jen Tapper: 022 627 6314

Orphan boy lambs available from a sheep milking farm to be raised. Can be neutered on the Animal Vet Health day to be held at school early September.

Together As One! Confident Can Do Kids! Honour Be Your Guide.

Lambs & Goats:

Contact Brooke: 021488854

We now have lambs available for Ag Day. They can either be returned after Ag Day or kept. Our kids are available too but please note we do not take goats back. Ready now.

Calves:

Contact Roger Duncan 021 929 263

Roger (and his wife Karen) will be offering calves for sale (not to be returned to farm) They are also available to offer advice, and can sell feed/colostrum etc to assist with the raising of the calf as required. Some keen children may enquire about rearing a calf at Roger's farm if they are dedicated and reliable.

Chickens:

Eureka Poultry Farm will be able to supply 7 week old Hyline chicks for anyone that wants to raise a chicken. Please email pta@tamahere.school.nz to order them and collect straight from the farm or from school on Friday 26th August.

GOLF DAY

Tamahere Model Country School runs an **annual golf day**. It is a fund-raising opportunity for the school as well as a load of fun for all of those involved. Our goal this year is to support the fundraising for a range of ongoing projects at Tamahere Model Country School. Our regular fundraising activities have been impacted by the COVID restrictions so we are pleased to be able to go ahead with this event.

It is planned for **Friday 9th December** at Walton Golf Club. In the past, we held it at the Narrows Golf Course but this is now closed to the public. Walton Golf Club was accommodating to our school's needs.

A MASSIVE thank you to Advice4Life, our principal Golf Day sponsor.



We are looking for three types of sponsors:

1. **Provide an Auction Item**
2. **\$300 – General hole sponsor**
3. **\$500 – Prime hole sponsor**

Together As One! Confident Can Do Kids! Honour Be Your Guide.

With either of the sponsor options above, this provides the ability to market your business at your discretion (signage and branding). We encourage being creative with your business promotion to maximise the enjoyment of the day.

It is predominantly a fun day that everyone loves to be involved in and if you wanted to put in a team as well the cost is:

- **\$50 per player** (\$200 for a team of four) for the nine-hole tournament (no bus ride option available). The nine-hole tournament is in the morning (approximately 9 a.m.)
- **\$90 per player** (\$360 for a team of four) for the 18-hole tournament. The 18-hole tournament runs into the afternoon (approximately 11:30 a.m.) This includes a FREE BUS SERVICE from Tamahere School and back. This is to ensure we are responsible hosts.

We will also have an online auction system that we will get you to log into once we have sufficient auction items. You won't have to be present on the day to be a part of the bidding, so we will encourage you to join in on the fun!

Please email Callum Malcolm - Callum.Malcolm@craigsip.com if you are happy to contribute or wish to play.

Thank you in advance for your support

From Tamahere Model Country School

PTA NEWS



Friday Treats

- 2:30 outside Karaka 15 and in the junior area.
- Term 3 \$1 for a cookie
- You can use EFTPOS to get a treat card from the office.



Quiz Night 20th August

- Get a team together and decide a theme for your table. Email pta@Tamahere.school.nz to sign up.
- Prizes for best costumes.
- Donations of raffle prizes needed.



An Afternoon with Sir Graham Henry

- Friday 2nd September, tickets are now for sale.
- Thanks to Johnston Associates & Lewis Lawyers for sponsoring.



Dinner at the Boundary 8th September

- An time for all parents to get together.
- Platters will be available and sign up form will come out soon.
- Make connections with others in your childrens syndicate.



PTA Meeting 13th September

- Join us in the staff room at 7:00pm.
- Informal and social.
- Everyone welcome.



Sausage sizzle

- End of term lunchtime treat.
- \$2 per sausage
- Let us know any dietary requirements.



Ag Day 20th October

- Lots of info is on our website now under "Our School"
- If anyone would like to help on the day please email pta@tamahere.school.nz
- Info booklets will go out in Term 3.



Group Day 25th October

- Similar to Ag Day but competing with other schools.
- Anyone can enter, you don't have to place.
- If anyone would like to help on the day please email pta@tamahere.school.nz

Together As One! Confident Can Do Kids! Honour Be Your Guide.

MPI Biosecurity Detector Dog Puppy Walking Programme



Biosecurity New Zealand

Ministry for Primary Industries
Manatū Ahu Matua

WE NEED YOU

Help protect New Zealand – foster a Detector Dog puppy



We're looking for families to foster a puppy from our next litter due soon. If you live in Auckland or Hamilton, have a fully fenced section, and are home most of the day; we want to hear from you!

For more details:

Visit **biosecurity.govt.nz/fosterpuppies**

Check out **facebook.com/MPIdetectordogs**

Email **detector.dog@mpi.govt.nz**

Together As One! Confident Can Do Kids! Honour Be Your Guide.

After School Running Fitness

AFTER SCHOOL RUNNING FITNESS!

Some kids just want to run and this is what I would like to cater for. Beside the obvious crossover of speed and endurance to other sports this will be a great fun way to burn off some extra energy in a fun but challenging way

Location on the reserve TCC end

7-9yr olds 2:45-3:30pm

10-12yr olds 3:45-4:30pm

Every Wed till the end of term

Limited spaces

\$40per child

txt Paul on 021 08 949 818



Term 3 Fitness Classes On Offer

CLASS SCHEDULE

#SUMMERBODIESAREMADEINWINTER

Tamahere Fitness Pass for Term 3 \$250 for as many as you can

Monday	Tuesday	Wednesday	Thursday	Friday
6 am	6:15 pm	6 am	6:15pm	6 am
HardCORE Monday Inside TCC Start the week with a good stretch then lets get that Core burning with 20min abs!!	After Work Special 45 min Circuit/ Bootcamps OUTSIDE the Community Centre	Hump Day HIIT Inside TCC Get the heart pumping with a quick fire high intensity mid-week workout	After Work Special 45 min Circuit/ Bootcamps OUTSIDE the Community Centre	Full Body FriYay! Inside TCC Finish the week right working every inch with a full body workout ready to enjoy the weekend

Sunday

8:30 am
Running Buzz

60 min Working on strength, mobility, technique & fitness to help you run better & injury free

Goals:

- Improve your health
- Push yourself physically & mentally
- Move with confidence
- Encourage & support each other
- Have a laugh

Mindful Exercise Coaching
& Healthy Habits

CONTACT PAUL JOHNSON
WWW.WAIPIIKI.COM
CALL OR TXT 02108949818

Together As One! Confident Can Do Kids! Honour Be Your Guide.