

TAMAHERE

MODEL COUNTRY SCHOOL

Phone: (07) 856 9238

Website: <https://tamahere.school.nz/>

Email: reception@tamahere.school.nz



Nurturing Our Future - Growing Together
Kia atawhai aa mua - Kia tipu ngatahi

Wiki/ Week 2 Happenings:



1884-2024 Happy Birthday Tamahere School! 140 years old this Monday 13th May.

Monday is nearly upon us - Time to celebrate a great 140 years of Tamahere School!

Dress up 1884 style:-

We are hoping that all children are able to come to school dressed in clothes that might fit the 1884 era. Thank you to Miss Grant and Kauri 2 who shared their learnings on what children and adults might be wearing in this [link](#). Hopefully, these items can be achieved quite easily but if you are unable to dress your child in clothes that might work for the period, it is better that they wear our school uniform rather than bright colours and logos, etc. as we are planning to have a full school photo in front of the library. This is not a casual free dress-up day but for specific learning. Thank you for your support in this.



Learning and thinking about what it was like 140 years ago:-

140 years ago there was no plastic being used in schools. Please help encourage your children to live the way that children did in 1884 and bring their lunch in a paper bag or basket etc. We are hoping to have lunch all together as a large **family/community picnic** if the weather is fine. If it works for you, please join us and bring a basket and rug for your family.

Our plan for the day:-

8:45 am - Handheld bell rings

- ❖ Class activities
- ❖ Full school parade and photo in front of the library.
- ❖ Children enjoying the vintage cars and horse and buggy.

11:00 am - Handheld bell rings - **All visitors welcome!**

Please feel free to wander around the school to watch demonstrations outside and see inside 2024 classrooms.

- ❖ Each Syndicate will be having fun demonstrating different aspects of 1884 school life that they have been learning about:
 - **Folk Dancing** on the tennis courts with Taupiri Syndicate
 - **Games** with Pirongia Syndicate in their area and
 - Maungatautari Syndicate will be practising their **skipping** in front of their main block.
 - There will also be **vintage cars** to see in front of the library.
- ❖ The **PTA** will be serving **tea, coffee and sweet treats** out of the TCC hatch window for a gold coin donation.

11:30 am - Handheld bell rings

11:35 am - **Special sharing assembly in the TCC**

12:25 am - Handheld bell rings

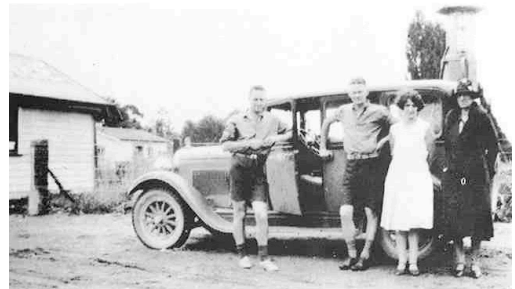
12:25 pm - Outside to enjoy a **combined school and family/community picnic** outside the library.

1:00 pm - Handheld bell rings -

- ❖ Visitors head home and children head back to classes for 2024-style learning.

NB:-

1. *If students are being taken home early, please ensure their classroom teacher is informed and they are signed out at the office.*
2. *Thanks to the generosity of families with Pumpkin Night donations, we have many packets of lollies left over and have planned to give each child a small bag of lollies to take home from our celebrations. If you do not want your child to have the sugar and would prefer a pencil please let your classroom teacher know.*



New Deputy Principal:-

We are very pleased to announce that we have appointed **Mrs. Leanne Somerville Smith** to be our new Deputy Principal. Mrs Somerville Smith will be joining us on Tuesday 4th June after King's Birthday weekend. Leanne is an experienced Deputy Principal who comes to us after 18 years as Deputy Principal at Glenfield Intermediate School in Auckland. Since moving with her family to Cambridge last year, Leanne has been the Learning Support Coordinator at Rototuna Junior High School. Leanne will be joining Natalie Toohey and myself to complete our Senior Leadership Team. We plan to welcome Mrs Somerville Smith with a whakatau on Tuesday 4th June.



Kiwi Competitions for Maungatautari students

This is a reminder for Year 5 and 6 students and whānau that registrations for the Kiwi Competitions, an extra academic challenge in Maths, English, Science and Spelling, close soon (May 17th). If you are interested or have any questions, please let Josh Martelli jmartelli@tamahere.school.nz know. The cost for each competition is \$9.90. More information about the competitions can be found here: [Kiwi Competitions | University of Canterbury](#)

After School Care

If your child is part of the ASC, you might have heard them talking about the *very* popular "Ice Hands". The gloves that we use to cut up fruit and prepare sandwiches, get a second life as gloves with water and food colour or paint.



PINK SHIRT DAY 2024:

On Friday, May 17th, our school will be celebrating Pink Shirt Day. This day promotes kindness and inclusiveness, encouraging students to prevent bullying through love (Aroha) and empathy. It's about promoting a community where everyone feels safe, valued, and respected.

Aotearoa will unite to stand against bullying, with the Mental Health Foundation of New Zealand (MHFNZ) leading the campaign since 2012. Their message is clear: Speak Up, Stand Together, Stop Bullying!

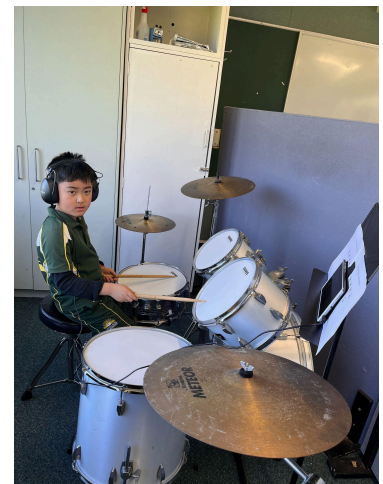
Together As One! Confident Can Do Kids! Honour Be Your Guide.

We will be having a uniform-free day and we encourage our students to bring a gold coin donation and dress in pink (māwhero) to spread the message of kindness. All proceeds will go to the Mental Health Foundation. Your support in this important cause is greatly appreciated.



NEW DRUM KIT!!

We are very excited to have a new drum kit thanks to **Luke Hampton**, who very kindly sourced a much better model for us and donated it to our school for all our budding drummers to be able to use. Thank you for your generosity which is greatly appreciated, giving our students more opportunities to be creative and explore music while learning the drums.



START CARE Asthma Study

Do you know someone 5-11 years old with asthma, who may be open to participating in a world-leading study?

The Medical Research Institute of New Zealand (MRINZ) is currently running a groundbreaking asthma trial for tamariki. **The START CARE Asthma Study** compares two different inhalers to find out which one is better at preventing asthma attacks in children. This potentially world-changing research, by Aotearoa New Zealand's leading independent medical research institute, aims to help kids everywhere, particularly tamariki here in Aotearoa, which has some of the worst asthma rates in the world.

Watch the little video [here](#) to find out more, or head straight to the [START CARE STUDY summary](#) to get all the details.

Together As One! Confident Can Do Kids! Honour Be Your Guide.

Upcoming Dates:

May / Haratua	
WEEK 3	
<i>Rāhina / Monday 13th</i>	★ HAPPY 140th BIRTHDAY Tamahere Model Country School
<i>Rāmere /Friday 17th</i>	★ PINK SHIRT DAY
WEEK 4 - Road Safety Week	
<i>Rāapa /Wednesday 22nd</i>	★ Pirongia Camp - Yr 4's Camp Raglan Yr 3 EOTC Day 1
<i>Rāpare /Thursday 23rd</i>	★ Pirongia Camp - Yr 4's Camp Raglan Yr 3 EOTC Day 2
<i>Rāmere /Friday 24th</i>	★ Pirongia Camp - Yr 4's Camp Raglan Yr 3 EOTC Day 3
WEEK 5	
<i>Rātū /Tuesday 28th</i>	★ BOT Meeting at 7.00pm
June / Pipiri	
WEEK 6	
<i>Rāhina / Monday 3rd</i>	★ KING'S BIRTHDAY
<i>Rāpare /Thursday 6th</i>	★ TMCS Hosting Regional Chess Power Tournament
WEEK 7	
<i>Rātū /Tuesday 11th</i>	★ Marae Hapu Visits & Activity Day
<i>Rāmere /Friday 14th</i>	★ FIELDAYS FRIDAY - TEACHER ONLY DAY
WEEK 8	
<i>Rātū /Tuesday 18th</i>	★ Marae Hapu Visits & Activity Day ★ PTA Meeting at 7.00pm
<i>Rāpare /Thursday 20th</i>	★ Marae Hapu Visits & Activity Day
WEEK 9	
<i>Rāhina / Monday 24th</i>	★ PHOTOLIFE - Team Photos
<i>Rātū /Tuesday 25th</i>	★ BACK UP DAY - Marae Hapu Visits & Activity Day ★ BOT Meeting at 7.00pm
<i>Rāpare /Thursday 27th</i>	★ PJ DAY ★ DISCO
<i>Rāmere /Friday 28th</i>	★ MATARIKI
July / Hōngongoi	
WEEK 10	
<i>Rāmere /Friday 5th</i>	★ LAST DAY OF TERM 2

Together As One! Confident Can Do Kids! Honour Be Your Guide.

IMPORTANT DATES:

Fieldays Friday - Teacher Only Day - 14th June:

As per previous years with the horrific Fieldays traffic and travel restrictions, we will be having a **Teacher Only Day on Friday 14th June**, which we hope will help to ease the congestion and frustration for many of you. This day will be part of the Ministry's revised curriculum development schedule. Please mark this date on your calendars. Once again we do apologise for any inconvenience.



PB4L - Positive Behaviour for Learning

Students of Week 1, Term 2

Kia Kotahi - I am kind and inclusive

<i>NIKAU 1</i>	<i>Indie J-M</i>	<i>TANEKAHA 12</i>	<i>Evelyn S</i>
<i>KAURI 2</i>	<i>Tori A</i>	<i>MIRO 13</i>	<i>Hannah D</i>
<i>KAWAKAWA 3</i>	<i>Hayden N</i>	<i>PUKATEA 14</i>	<i>Maia G</i>
<i>TITOKI 6</i>	<i>Emily B</i>	<i>KARAKA 15</i>	<i>Morgan F</i>
<i>RIMU 7</i>	<i>Opal R</i>	<i>MANUKA 16</i>	<i>Logan L</i>
<i>POHUTUKAWA 8</i>	<i>Marley M</i>	<i>MAHOE 17</i>	<i>Zac S</i>
<i>TOTARA 10</i>	<i>Neve O</i>	<i>TAWA 19</i>	<i>Ava L</i>
<i>MATAI 11</i>	<i>Ema R</i>	<i>HOROPITO 20</i>	<i>William L</i>



**Positive
Behaviour
for Learning**

Together As One! Confident Can Do Kids! Honour Be Your Guide.

2024 TERM DATES:

TERM	START DATE	END DATE
Term 2	Monday 29 April 2024	Friday 5 July 2024
Term 3	Monday 22 July 2024	Friday 27 September 2024
Term 4	Monday 14 October 2024	No later than Friday 20 December 2024*

COMMUNITY NOTICES

FUN, EDUCATIONAL CHESS CLASSES

We have some great chess classes available after-school this term, delivered by awesome Chess coaches! **Magic Mondays** for beginners, and **Wild Wednesdays** for experienced players. What's more - they are really affordable.



MAGIC MONDAYS

Designed for beginners. Includes a fun-filled lesson focussed on chess principles and a tournament game.

Less than \$11/session (40% off)

[Learn More](#)

WILD WEDNESDAYS

Designed for intermediate and advanced players. Includes a tactics-filled challenging lesson and a tournament game.

Less than \$16/session (40% off)

[Learn More](#)

Together As One! Confident Can Do Kids! Honour Be Your Guide.



AIR TRACK TUMBLE CLASS

TAMAHERE COUNTRY MODEL SCHOOL

Beginner and advanced classes for all school years



**Term
2**

Monday 12:30-1:15pm.
6th May - 1st July

8 weeks with grade certificate **\$115**

Book online at
www.thegymnasticacademy.com

Call Marie for more information **0211705426**

bricks 4 kidz
AFTER SCHOOL ENRICHMENT PROGRAMME
Tamahere Model Country School

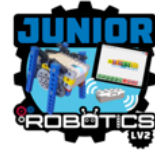


Junior Robotics Level 1:
Combines model building and WeDo "drag and drop" coding to spark interest in STEAM
Fridays 2:30-3:30pm/4:30pm
Location: Puriri 5
\$25 / 1 Hour
\$35 / 2 Hours
First Week FREE

DEVELOPS INFORMATION PROCESSING & PROBLEM-SOLVING SKILLS

INSPIRES GROWTH MINDSET THROUGH DESIGN & CRITICAL THINKING

SHAPES INNOVATIVE & CREATIVE THINKERS FOR THE FUTURE



Junior Robotics Level 2:
Sensor Programming
Wednesdays 2:30-3:30pm/4:30pm
Location: Puriri 5
\$25 / 1 Hour
\$35 / 2 Hours
First Week FREE



Scan to enrol

Find your school at: www.bricks4kidz.co.nz/hamilton-north/after-school-classes/
Email: hamilton-north@bricks4kidz.com Phone: 021-346-661

We Learn, We Build, We Play with LEGO® Bricks

Together As One! Confident Can Do Kids! Honour Be Your Guide.