

# TAMAHERE

## MODEL COUNTRY SCHOOL

Phone: (07) 856 9238

Website: <https://tamahere.school.nz/>

Email: [reception@tamahere.school.nz](mailto:reception@tamahere.school.nz)



Nurturing Our Future - Growing Together  
*Kia atawhai aa mua - Kia tipu ngatahi*

### Wiki/ Week 8 Happenings:

What a great week we have had, with so much happening and such success for our tamariki. We started on Monday with a whakatau to welcome our newest aakonga/students to kura/school, with our Kapa Haka roopuu powerfully performing haka and waiata. This was followed up with our top cross country runners competing at the highest level event at the City Cluster Cross County on Thursday. Our school had huge success, taking out the winning places in four of the six race categories and placing second in the other two, as well as great results across the whole team on a hilly course at Hamilton Gardens. Last night, our choir of 50 took to the stage along with over 100 other students from across our Country Cluster, to perform as a massed choir, singing songs from musicals and also presenting two items alone for our school. Our Kia Maia aakonga shone, singing with strength and pride, leaving goosebumps down peoples' spines! What a show. We have now got the staging, lights and sound set up ready for our production in Week 10.

Further information and photos are shared later in this newsletter. We also wish our Jump Jam team all the best for their competition this weekend.

**Next week is Maaori Language Week** - A week to remind us of the importance of te reo Maaori to our Maaori whanau and community and also for us as New Zealanders. Your tamariki have come along in leaps and bounds with their confidence, abilities and pronunciation in te reo Maaori. I think we are as a nation much more aware and use a wider variety of kupu/vocab as part of our overall unique Aotearoa New Zealand Culture.

### Whakatau

We welcomed six new students and their whaanau at our Whakatau on Monday. This is a lovely way to welcome and introduce all of our new students to the school. We were very proud of our Kapa Haka Roopuu and our leaders, who led with karanga, waiata and our haka.

We hope you have a very happy and successful time at our school - **Karma H, Pat W, Boston C, Ru B-S, Luka S and Mia L.**

*Together As One! Confident Can Do Kids! Honour Be Your Guide.*



*Together As One! Confident Can Do Kids! Honour Be Your Guide.*



## South East Hamilton Country Cluster Music Festival

A glimpse of our day yesterday with all the schools practising in the morning and the spectacular full show at night.



*Together As One! Confident Can Do Kids! Honour Be Your Guide.*

# Ngaa Puuraakau o Aotearoa The Stories Of New Zealand

Only 6 school days until our production kicks off! We hope you will all be able to join us in Week 10. Thank you to you all, we know you are supporting us with organising costumes and re-organising your family to be able to attend our two performances in the early evening on Wednesday 25th and Thursday 26th September. We hope you enjoy the show!

**Tamahere Model Country School presents...**

## Ngaa Puuraakau o Aotearoa The Stories Of New Zealand



**Ticket information:**

Tickets will be on sale between 8.00 am and 8.25 am next week from outside Titoki 6.

\$10 per adult and \$5 per student - cash only. (In previous productions we have had several full house sellouts so you will not need to purchase a ticket for your toddler, but they will need to sit on your knee. If your toddler becomes restless, please be considerate of our performers.)

**Show times:**

Tuesday 24th September at 11 am

Wednesday 25th September at 11 am and 6 pm

Thursday 26th September at 6 pm

*Together As One! Confident Can Do Kids! Honour Be Your Guide.*



## Production support!! Can you help us?

Are you or do you know of a photographer or a person who could video and photograph our production in Week 10? If you are able to help us or know of someone who could, please let one of our Deputy Principal's know - Mrs Toohey or Mrs Sommerville Smith.

## Class Placements for 2025 - Let Us Know!! - 3rd Reminder

As we approach Term 4, it is once again time for us to start planning our classroom environments for next year.

When we organise classes in our school we look at each of our students' academic and social needs and abilities. We use our cumulative teachers' notes and check friendships with each child. We strive to achieve the best possible learning environments for all of our students and teachers. We actively decide to separate some students and join others, to achieve the best possible learning and teaching outcomes.

While providing support, we also work to build resilience and independence in our students, so that they will be able to cope with change and the next steps in their educational journeys when they transition from us to other schools. Our aim with mixing students around is to develop a school environment where students know and are happy to work with many other students, to give opportunities to develop further friendships and to have a break from others to improve concentration and learning.

If you believe you have *any special information that you feel our teachers may not be aware of*, for example – the possibility of avoiding a competitive cousin in the same class, or neighbourhood friends that get to see each other too much, **please let your class teacher know** as they will add any relevant comments to the cumulative placement sheet. It is important if you have any information to share that you **let us know before the end of this term**. Please, do not feel you must make comments as we are not expecting many cousins, etc to be a consideration. This is for information that we are unaware of.



*Together As One! Confident Can Do Kids! Honour Be Your Guide.*

## SEH Interschool Country Cluster Cross Country



On the fifth of September Tamahere hosted the Country Cluster Cross Country event. Five schools competed in the competition. Tamahere, Tauwhare, Newstead, Matangi and Seventh Day Adventist. Everybody tried their very best. In the end, Tamahere placed first in every race and many others came in the top ten. Good job to everybody who pushed themselves to the limit and worked super hard for this event.

Thank you to our ambassadors who showed the schools the course.

By Addi M and Charlotte C

*A big thank you to parents Paul and Zoe Johnson, and also Maree Coutts and Angela Thomas (Thomas Real Estate), for the wonderful job they did cooking and serving the sausages for all of the hungry runners. Property Brokers also generously provided their BBQ trailer for the morning, as well as donating a box of apples for the athletes to enjoy!*

*Russell & Angela*  
**THOMAS**

## 5th September - SEH Interschool Cross Country Results

Year 4 Girls	Year 4 Boys
1st Amelia J 3rd Molly vdH 4th Ayla H 6th Rocklynn J 9th Riley D	1st Quinn B 2nd Van W 4th George C 8th Samuel C 9th Benjamin McC

***Together As One! Confident Can Do Kids! Honour Be Your Guide.***

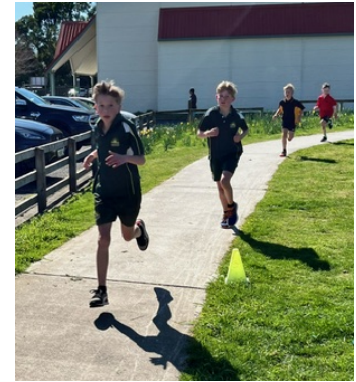


Year 5 Girls	Year 5 Boys
1st Harriet L 5th Greta C 6th Diya O 7th Ellie K 8th Thea B 9th Chilli M	1st Dylan H 2nd Pearse L 3rd Anru S 6th Lucas E 8th Benji vdH 9th Lucas P
Year 6 Girls	Year 6 Boys
1st Addison M 3rd Holly H 5th India D 6th Chloe A Y 7th Olivia A Y 8th Charlotte C 9th Maia G	1st Cohen C 2nd Zac S 3rd Skip tB 5th Isaac S 8th William T 10th Logan L



***Together As One! Confident Can Do Kids! Honour Be Your Guide.***





***Together As One! Confident Can Do Kids! Honour Be Your Guide.***



# WACKY WIG WEDNESDAY

Thank you for getting wiggy with us on Wacky Wig Wednesday!!!! The funds and awareness raised will have a huge impact on the lives of tamariki with cancer and their whaanau. With everyone's amazing efforts we were able to raise just over \$720.00, which will be donated to the Child Cancer Foundation. Thank you to our wonderful school community for your support!



## Upcoming Dates:

September / Mahuru	
WEEK 8	
Rahoroi/ Saturday 14th	★ Jump Jam Competition
WEEK 10	
Rātū / Tuesday 24th	★ PRODUCTION - Matinee 11am
Rāhoroi / Wednesday 25th	★ PRODUCTION - Matinee 11am - Night Show 6pm
Rāpare / Thursday 26th	★ PRODUCTION - Night Show 6pm
Rāmere /Friday 27th	★ LAST DAY OF TERM 3
IMPORTANT TERM DATES	
Rātū / Tuesday 17th December	★ Last Day of Term 4
Rāhina / Monday 3rd February	★ First Day of 2025

Together As One! Confident Can Do Kids! Honour Be Your Guide.

## Weetbix Tryathlon - 8th December 2024

This year the Weet-Bix Tryathlon will be held on **Sunday 8th December**. If you would like your child to participate as part of our school group you can click the link below which will take you to the Tamahere School Group. From there you will be able to register your child. This is a great opportunity for children to have a go at a tryathlon in an environment with lots of support and encouragement. They are able to participate as individuals or as a group.

[School Link](#)

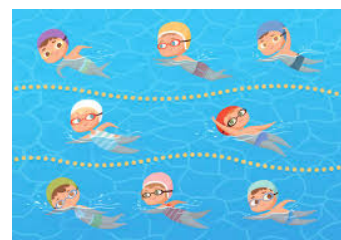


## Hamilton Weet-Bix Kids TRYathlon

Sun, December 8, 2024 8:00 am

## Tamahere Vela Pool / St Peters Learn To Swim

We are very pleased to once again be partnering with St Peters Swim School, to have Learn-to-Swim Lessons operating from our school pool for the last five weeks of Term 4 and in Term One 2025. Booking information will be sent out in Week One next term.



*Together As One! Confident Can Do Kids! Honour Be Your Guide.*



*Congratulations to the Year 6 Tamahere Magic Netball Team who won the Fair Play award at prize giving last Saturday. Each week the teams were scored out of 5 for Fair Play by the umpires. Tamahere Magic scored the highest points (tied with Hautapu Whio) out of 12 teams. Apparently, they scored lots of 5s!! Well done girls!*



Ollie, Elise & Zeek were all finalists last weekend at the Hamilton Brick Show in the kids competition. Zeek came first and won a \$100 Toyworld voucher for himself and a big box of Lego for his classroom.



***Together As One! Confident Can Do Kids! Honour Be Your Guide.***

## SPORT WAIKATO

Coaches & Parent/Whaanau Coaches!



*Do you help sports happen by putting your hand up to coach a team? Sport Waikato wants to hear about your experience and they'll use this information to help improve the coaching experience for future coaches and the players they coach! It's anonymous so they won't share any personal identifying details with anyone.*

*Share your experience <https://www.surveymonkey.com/r/RMWC6KD> (the survey takes approximately 5 minutes to complete)*

*These insights will help Sport Waikato staff, sporting organisations and schools in the Waikato region make informed decisions for their coaching support to provide the best experience possible for coaches and their communities. The broader findings may be used to share via social media, in case studies, reports or articles.*

*Tag a coach that you think should take the survey*

*The survey closes at 5pm, Friday 27 September 2024*

## PB4L - Positive Behaviour for Learning

*Students of Week 7  
I try my best even when things are hard.*

*Kia Maia  
'Confident Can Do Kids'  
We strive to do our best with a positive 'can-do' attitude.*

<i>NIKAU 1</i>	<i>Jecca P</i>	<i>MIRO 13</i>	<i>Lenny M</i>
<i>KAURI 2</i>	<i>Samuel B</i>	<i>PUKATEA 14</i>	<i>James McG</i>
<i>KAWAKAWA 3</i>	<i>Sienna W</i>	<i>KARAKA 15</i>	<i>Victoria T</i>
<i>TITOKI 6</i>	<i>Hudson C</i>	<i>MANUKA 16</i>	<i>Sam B</i>

*Together As One! Confident Can Do Kids! Honour Be Your Guide.*

<i>RIMU 7</i>	<i>Danni P</i>	<i>MAHOE 17</i>	<i>Steven D</i>
<i>POHUTUKAWA 8</i>	<i>Leah S</i>	<i>TAWA 19</i>	<i>Teacher Absent</i>
<i>TOTARA 10</i>	<i>Evie W</i>	<i>HOROPITO 20</i>	<i>Pippa R</i>
<i>MATAI 11</i>	<i>Hana K</i>	<i>HOROEKA 21</i>	<i>Jiana P</i>
<i>TANEKAHA 12</i>	<i>Luka B</i>		



## Ag Day 2024 - Thursday 17th October

**2 weeks left to enter for Ag Day, entries must be in by Fri 27<sup>th</sup> September!!**

### Pet Diaries:

Children have two options: A hard copy, a notebook, a clear file, etc. (what is included in it is up to you - there is no set criteria). The second option is to create a Google slide pet diary. We will let you know who to give or send these to in Week 1 of Term 4. If you have any questions, please see Miss S or Mrs Smit.



Click here to find out everything you need to know regarding Ag Day [Link to AG Day info on school website](#)

***Together As One! Confident Can Do Kids! Honour Be Your Guide.***



## HOW TO ENTER AN ANIMAL?

Every child that wishes to enter an animal into Ag Day will need to complete an entry form, the links to do this are below. Note: Entry forms will need to be completed by the **end of Term 3**, to allow for data to be collated, number of judges requested, and ribbons ordered.

Please email [agday@tamahere.school.nz](mailto:agday@tamahere.school.nz) if you have any questions.

Any child who wishes to enter must complete an entry form:

[Entry Form for Kid Goat](#)

[Entry Form for Calf](#)

[Entry Form for Lamb](#)

[Entry Form for Pony](#)

[Entry Form for Raising Poultry](#)

[Entry Form for Showing Poultry](#)

[Entry Form for Caged Pet](#)



## HOW TO ENTER A VEGE GARDEN?

### Vege Garden Competitions Timeframe:

The Vege Garden competition opens on Saturday, 25th August. Gardens must be started on or after this date, and can run until judging, which will take place at the end of the October school holidays (12/13 October). Prize winners will be announced at Ag Day.

The criteria is open to the children to decide what they would like to create. Get inventive and use your imagination! Gardens are not intended to be brought to school and **will be judged at the location of the garden** (home/residence). Entries can be something as simple as lettuce grown in an upcycled container, through to a project carefully thought through with an elderly neighbour or grandparent.



Children will need to keep a diary containing details on what, and when, they have planted. Plants may be started as seeds or seedlings and children should understand basic principles, such as planning the garden, preparing the soil, watering, pest and weed management. Other than that, we are keen to see our children outside enjoying the fresh air, hands on and getting creative!

Any child who wishes to enter must complete an entry form:

[Entry Form for Vege Garden Competition](#)



***Together As One! Confident Can Do Kids! Honour Be Your Guide.***

## Cambridge Vets Health Check

A special thanks to Cambridge Vets and Dr Paul Fraser and Kelvin Scown, who kindly sponsored the morning, providing free vaccinations, health checks, advice, tail docking and castration of lambs.



## YUMMY STICKER SHEETS

If you have any **FULL YUMMY STICKER SHEETS**, can you please return these to the office by the end of Term 3, so that we can send them off to claim our free sports equipment. The more you collect, the more sports gear we can receive. Thank you for your continuing support.



*Together As One! Confident Can Do Kids! Honour Be Your Guide.*



## Hats in Term 4

With hats being compulsory for Term 4, it is a great time to organise for children's names (first name and first letter of surname) to be embroidered on the back of their school hats. This costs only \$9.00 each! Not only is this an extremely competitive price, but the investment in purchasing only one hat and eliminating the need for several replacements more than pays for itself.



This is not just for brand new hat purchases but existing hats too!

To be included in time for Term 4, please bring your child's hat to the school office with your \$9 payment (or order a new one for a total of \$30). This can take between 1-2 weeks, so please order as soon as possible.

## TMCS 2024 GOLF DAY - Friday 29th November

Hi all, we are pleased to advise there has been strong interest in our annual golf day, being held at Ngāruawāhia Golf club on 29<sup>th</sup> November. If you would like to book a team, please let us know at [callum.malcolm@craigsip.com](mailto:callum.malcolm@craigsip.com) or [david.palmer@colliershn.co.nz](mailto:david.palmer@colliershn.co.nz)

We are keen to make sure we can accommodate everyone so please get your entries in early.

There will be a chance to win \$50,000 on the day, courtesy of our hole in one competition. Your team entry also includes access to the bus service to and from the golf club for those not wanting to drive. We will also be running the auction again this year (that will have some amazing items up for grabs closer to the day)..

We will keep you updated in coming weeks...if you are wanting to become involved as a sponsor or auction item provider, then please let us know.

### Tamahere Model Country School Annual Golf Day



**When: Friday 29th November**  
**Location: Ngāruawāhia Golf Club**

We are actively seeking sponsors for this event.

Team entries can now be booked.

For team entries and sponsorship inquiries, email Callum or Dave  
[Callum.Malcolm@craigsip.com](mailto:Callum.Malcolm@craigsip.com) [David.palmer@colliershn.co.nz](mailto:David.palmer@colliershn.co.nz)



*Together As One! Confident Can Do Kids! Honour Be Your Guide.*



The Haus Of Blaster with support of the Waikato District Council Creative Community Grant presents the **Matangi Halloween Extravaganza**.

This year is going to be bigger and better than last!

Location: Matangi Hall, 478 Tauwhare Road, Matangi

Time: 4pm- 6:15 / 6:30pm - 9pm

Parking along roadside, and Matangi Road

This is wheelchair accessible.

Due to the overwhelming demand last year, we are running this extravaganza in 2 sessions (see times above), to keep the numbers under control, and to make entry times into the event much faster than last year.

This year there will be 2 queues - 1 express for Ticket holders to come in, and one for door sales.

There will be food stalls, a stilt walker, live entertainment, a performance from the Drury Lane Dance Studio , and Talents Of The Pacific Academy - TOPA . There will be interactive activities, Face painting, a Black light section, Costume competition and a dance floor to boogie to the music!!

Each child receives a Goodie Bag (a \$6 value) on arrival.

Tickets here:

<https://www.tickettailor.com/events/hausofblaster/1387755>

If you have any questions about this event , please contact David Tasker

[hausofblaster@gmail.com](mailto:hausofblaster@gmail.com)

***Together As One! Confident Can Do Kids! Honour Be Your Guide.***



## Community Notices

Tennis is back for Term 4 at Tamahere School. Lessons will take place on the school tennis courts on Friday afternoons. It all kicks off on Friday 18th October for 8 weeks. To register please visit [www.kiwitennis.co.nz](http://www.kiwitennis.co.nz) or contact Pete Hoyland on [pete@kiwitennis.co.nz](mailto:pete@kiwitennis.co.nz) for more information.  
[Click here to Register](#)

### Term 4 Tennis Coaching Schedule Tamahere School

Starts Friday 18th October for 8 Weeks

**Friday**

**Kiwi Red (5-7 yo):**  
2.45pm-3.30pm

**Kiwi Orange (8-10yo):**  
3.30pm-4.30pm

**Kiwi Green (10-12yo):**  
4.30pm-5.30pm




Book by visiting [www.kiwitennis.co.nz](http://www.kiwitennis.co.nz)  
 Any questions email  
[pete@kiwitennis.co.nz](mailto:pete@kiwitennis.co.nz)

FOR KIDS + ADULTS  
SIGN UP NOW

# CREATIVE WORKSHOPS


**RANGER Studio**

term two | 3:45-5pm  
wednesday + thursday classes  
\$275pp

Gather, learn and create.


- learn creative skills and new techniques
- create fun, quality, inspiring works
- top quality, sustainable materials
- experienced contemporary art tutors
- wednesday: paper mache sculpture
- thursday: painting on canvas
- 5yrs +

**BOOK NOW!**



Shed 81, Made Market  
@ the bottom of the spiral staircase

@rangerstudio.nz  
[www.rangerstudio.co.nz](http://www.rangerstudio.co.nz)






@SportsCamps4Kids



**RC4KIDS**  
RUGBY CAMP FOR KIDS

## RUGBY HOLIDAY PROGRAM

**\$60 PER DAY**

- ◆ Boys & girls ages 5 - 13
- ◆ All abilities welcome
- ◆ Skills and drills
- ◆ Team building
- ◆ Rippa and Touch games



**MON 30 SEPT - TUE 1 OCT**  
**HAMILTON MARIST**  
 147 OLD FARM ROAD, HAMILTON

**MON 30 SEPT - TUE 1 OCT**  
**HAUTAPU SPORTS CLUB**  
 8 LAURENT ROAD, CAMBRIDGE

**TIME:**  
 DROP OFF FROM 8:30AM  
 START TIME 9AM  
 FINISH 2:30PM  
 PICK UP BY 3PM

Register at [sportscamps4kids.co.nz](http://sportscamps4kids.co.nz)

*Together As One! Confident Can Do Kids! Honour Be Your Guide.*



**CONTACT:** Mark Jones  
 horotiu@kellyclub.co.nz  
 haupatu@kellyclub.co.nz  
 Phone: 07 839 9017  
 Facebook: @KellyClubHorotiu  
 Facebook: @KellyClubHaupatu

**OCTOBER 2024  
HOLIDAY PROGRAMME**  
 HOROTIU AND HAUTAPU SCHOOLS

WEEK 1	Mon 30 September	Tues 1 October	Wed 2 October	Thurs 3 October	Fri 4 October
	<b>SUPER SPORTS</b> Run, jump, throw, catch, dodge, bounce, hit and kick. Put your skills to the test with our selection of Super Sports!	<b>SURVIVAL OF THE FITTEST</b> Channel your inner survivor. Come up with a name for your tribe and prepare to combat the other teams in a morning of Kelly Club challenges.	<b>FORT DAY</b> We provide the boxes, you bring the imagination. Will you build a fort, restaurant, car or spaceship?	<b>BOUNCE AND SHOOT</b> Shoot some hoops and sharpen your skills. We're all about basketball today. Please bring a plate of food to share for lunch.	<b>SAVIOURS IN ACTION</b> It's all about our emergency services today. Play jargon, put out the fire and practice your bandaging skills.
	<b>MEGA MONDAY</b> We play all the best 'M' games on Mega Monday. Minefield, master tag, monsters, manhunt and many more.	<b>MUSICAL MATHEM</b> Make sure you bring your dancing shoes because music rules this afternoon. Find the rhythm and feel the beat.	<b>KIDS VS COACHES</b> Who are the champions - kids or coaches? Today you get to go head to head against the coaches and see who comes out on top.	<b>BATTLE ROYALE</b> Bring your favourite nerf gun and plenty of ammo so you can battle it out with your friends. Play VIP and defend your base.	<b>4 CORNER SOCCER</b> Take on the other teams in a fast-paced afternoon of 4 corner soccer. Who'll take out the top spot?
WEEK 2	Mon 7 October	Tues 8 October	Wed 9 October	Thurs 10 October	Fri 11 October
	<b>WIZARD'S CUP</b> Calling all witches and wizards. Let the sorting hat determine your house, make a wand, play games and make wizard hat cocktail!	<b>FINAL COUNTDOWN</b> Every second counts today. Race against other teams, yourself and the clock with a heap of games and minute to win it challenges.	<b>FOOTBALL FRENZY</b> Whether you call it soccer or football, you can learn new skills or level up your existing ones today. Let's enjoy the beautiful game together.	<b>RED, WHITE AND BLUE</b> Let's play some of America's favourite sports and games. Please bring a plate of food to share for lunch.	<b>SIMPLY THE BEST</b> We're finishing with a bang and playing all the best games from all the holidays. Can you help us choose?
	<b>CRAZY TAG</b> Power up and bring your A game. You'll need all your energy for a crazy afternoon of tag. Choose your favourite versions to play.	<b>TOILET PAPER GAMES</b> Back by popular demand! Race all the other teams in the toilets, wrap the coaches up like mummies and much more.	<b>DYNAMIC DODGEBALL</b> If you love dodgeball, this is the place to be! Let's see how many types we can fit in. We'll play original, Jedi, 4 corner and more.	<b>KELLY CLUB GAMES</b> Work together to complete a series of challenges and see who comes out on top of the Kelly Club Games.	<b>PIYAMA PARTY</b> It's been a busy 7 weeks. Come dressed in your comfiest PJs because this afternoon we'll be chilling with a pyjama party.

**FULL DAY: \$59**  
8:00 am - 6:00 pm

**HALF DAY: \$39**  
8:00 am - 1:00 pm or  
1:00 pm - 6:00 pm

**General Information:** We believe in giving children opportunities to do the things they love and enjoy in a supportive and encouraging environment. We provide quality childcare in safe and fun surroundings for children out of school. Our holiday programme is focused around sports, games, and outings to local attractions. Our friendly staff are passionate about working with children. They are provided with training in behaviour management techniques, first aid and activity planning/delivery.

**Who can attend:** Children aged 5-13 yrs

**What do you need to bring:** Shoes and appropriate clothing, jacket or sweater, hat, drink bottle and food.

**Food:** Please bring plenty of packed food and drink for morning tea/lunch/afternoon tea. Lunch will be from approximately 12:30pm to 1:00pm each day.

**Programme activities:** Programme activities are adapted to suit children of all ages and children may be grouped by age depending on numbers. Programme activities may vary without notice dependent on weather conditions and programme numbers.

**Payment details:** Payment is required before the holiday programme begins. An invoice will be issued when a completed booking is received. All payment details will be included on the invoice.

**Work and Income OSCAR Subsidy:** Parents / caregivers that meet certain criteria will be able to access a WIPIC subsidy to help cover the cost of our programme. For more information visit [www.workandincome.govt.nz](http://www.workandincome.govt.nz)

**Please note:** Every care will be taken to ensure the safety of your child/ren and their property. However, organisers of Kelly Club accept no liability for any injury sustained to your child/ren or any loss or damage to his/her property while on the programme. If your child/ren are collected late after the conclusion of the programme you will be charged \$10 per 15 minutes or part thereof.



**AIR TRACK TUMBLE CLASS**

**TAMAHERE COUNTRY MODEL SCHOOL**

*Beginner and advanced classes for all school years*




**Term 4** **MONDAY 12:30-1:15pm**  
**14th OCT - 9th DEC**

*Advanced Class Tuesday 5-6:30pm (\$195)* **\$125**

*Book online at*  
[www.thegymnasticacademy.com](http://www.thegymnasticacademy.com)

**Call Marie 0211705426**  
 for more information

## Edventure Holiday Programmes and Camp

These holidays we are running 2 different holiday programmes and a camp.

OSCAR Available, Based at Berkley, BOOK NOW at [www.edventure.co.nz](http://www.edventure.co.nz)

- Edventure Everyday. \$55/day Sports, games, arts and crafts a different theme everyday, 5-13 yr olds.
- Dungeons and Dragons. \$80/day A half day board game experience with special guest Lewis. 8-13 yr olds
- Advanced Outdoors Camp @Ngamuwahine. \$675, Kayaks, Rock climbing, Awesome outdoor activities. 8-13 yr olds

# School Holiday Programmes/Camps

Advanced Explorer Camp  
 Edventure Everyday  
 Dungeons & Dragons

OSCAR Available, 5-13 yr olds, @Berkley  
[www.edventure.co.nz](http://www.edventure.co.nz)



**EDVENTURE NZ**  
 NATIVE OUTDOOR EDUCATIONAL HOLIDAY PROGRAMMES



**Together As One! Confident Can Do Kids! Honour Be Your Guide.**



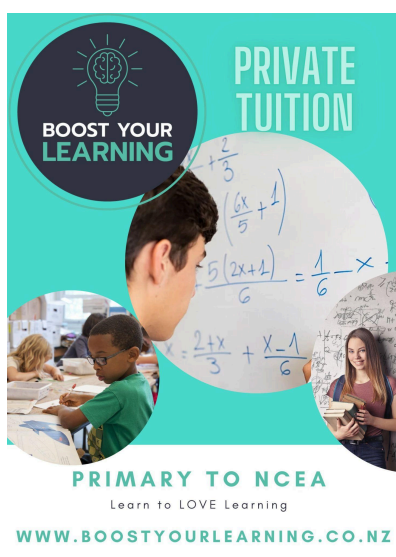
## Workshop Details:

- **Date:** Tuesday 8<sup>th</sup> October and Wednesday 9<sup>th</sup> October
- **Time:** 9am-1pm
- **Location:** Cambridge High School Hall
- **Ages:** Open to primary school students, ages 6-12 year olds
- **Cost:** \$40 Per day
- **Registration:**



[https://docs.google.com/forms/d/1U3VPG\\_4f039\\_woMO-jXTRo3T-SdtRSgc1NaUyNc5SiA/edit](https://docs.google.com/forms/d/1U3VPG_4f039_woMO-jXTRo3T-SdtRSgc1NaUyNc5SiA/edit)

The workshop will be led by our talented CHS dance students, who are eager to share their passion and expertise with younger students. It's a fantastic way for children to stay active during the holidays while trying something new or developing their existing dance skills.



**Together As One! Confident Can Do Kids! Honour Be Your Guide.**